

Teledyne RESON

SeaBat[®] T20-R

High resolution Multibeam Echosounder with fully integrated Inertial Navigation System



Superior acoustic quality engineered for the demanding marine environment

The SeaBat T20-R is a new addition to the leading SeaBat product range engineered from the ground up to evolve with your business. Combined with a Rack-mounted Sonar Processor (RSP), SeaBat T20-R provides uncompromised survey data in a highly compact package designed for small vessel use.

The solution includes a range of powerful software features at an attractive price, with the option for future feature expansions to grow with your needs.

The Rack-mounted Sonar Processor comes with an optional industry leading fully integrated Inertial Navigation System for accurate sensor time tagging and motion stabilization.

The SeaBat T20-R is designed for very fast mobilization on any type of survey vessels, securing minimal interfacing and low space requirements.

SeaBat T20-R Standard configuration

Rack-mounted Sonar Processor (RSP)

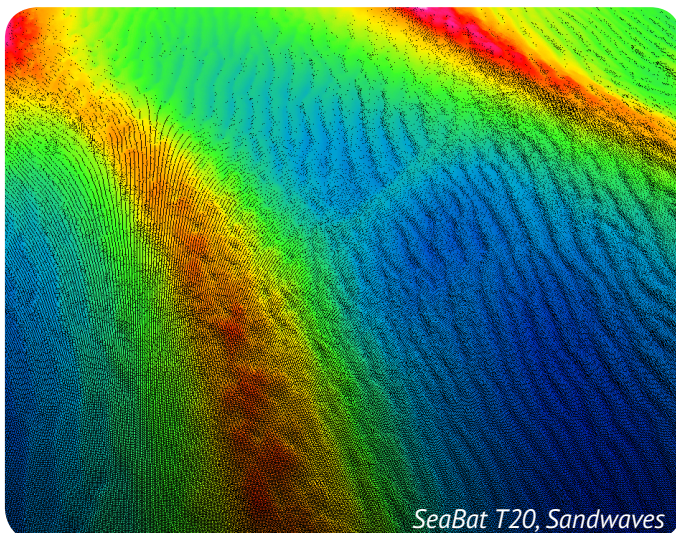
- Single point for all cable connections – for fast mobilization
- Accurate sensor time-tagging and motion stabilization from the optional integrated INS
- 10m cable configuration
- 2U form factor in standard 19" rack

SeaBat T20 sonar head assembly

- 190 – 420kHz wide-band sonar arrays
- Lightweight sonar bracket
- Robust titanium housing
- Less than 8kg in water

3 years warranty

Our hardware is quality-tested to meet the most demanding standards. Backed by the full support of our comprehensive after-sales program and 3 years of warranty, you can be sure that the SeaBat T20-R won't let you down.



PRODUCT BENEFITS

- All-in-one, fully flexible and fully integrated survey system
- The compact system allows for fast mobilization, minimal interfacing and extremely low space requirements
- Impressively clean and high data quality for faster operational surveys and reduced processing time
- Fully frequency agile from 190 to 420 kHz, allowing for improved swath performance and reduced survey time under challenging conditions
- The new compressed water column data significantly reduces data volume while maintaining the required information

SEABAT T20-R SYSTEM SPECIFICATIONS

Input voltage	100-230VAC 50/60Hz
Transducer cable length	10m (standard) Optional: 25m, 50m or 100m
Temperature (operational / storage)	Rack-mounted Sonar Processor: -5°C to +45°C / -20°C to +65°C

	Height [mm]	width [mm]	depth [mm]	weight [kg/air]	weight [kg/water]
T20 Rx (EM7219)	102.0	254.0	123.0	5.0	4.2
T20 Tx (TC2181)	86.6	93.1	280	5.4	3.4
Rack-mounted Sonar Processor	88 (2U)	478*	462	12.3-13.8	N/A
* Standard 19" rack-mount					
Teledyne Type 20/30 IMU	123	118	95.6	3.0	1.6

T20 Acoustic performance	400kHz	200kHz
Across-track receiver beam width¹	1° (center)	2° (center)
Along-track beam width¹	1°	2°
Number of beams	10 - 512	
Swath coverage (up to)	10°-140° Equi distance, 10°-165° Equi Angle	
Typical Depth (CW²)	0.5-150 meters	0.5-375 meters
Max Depth (CW³)	250 meters	550 meters
Typical Depth (FM³)	0.5-180 meters	0.5-450 meters
Max Depth (FM³)	300 meters	575 meters
Ping rate (range dependent)	Up to 50 pings/s	
Pulse length (CW)	15 - 300µs	
Pulse length (FM)	300µs - 10ms	
Depth resolution	6mm	
Depth rating (sonar head)	50 meters	

Teledyne INS Type -20	Roll/Pitch 0.02°	Heading ⁴ 0.015°	Heave ⁴ 5cm/5%	TrueHeave 2cm/2%	Optional postprocessing with POSPac MMS. Optional Fugro MarineStar®.
Teledyne INS Type -30	Roll/Pitch 0.01°	Heading ⁴ 0.010°	Heave ⁴ 5cm/5%	TrueHeave 2cm/2%	

For relevant tolerances for dimensions above and detailed outlined drawings see Product Description

1 Nominal values

2 This is a depth range within which the system is normally operated, from the minimum depth to a depth value corresponding to the max. swath -50%.

3 This is the single value corresponding to the depth at which the swath is reduced to 10% of its max. value. For actual swath performance refer to Product Description.

4 With 4m GPS base line. Heave 5cm/5% whichever is greater for periods +/- 20sec

T20-R Scope of supply

- Receiver EM7219
- Projector TC2181
- Rack-mounted Sonar Processor
- 10m Receiver cable
- 10m Projector cable
- Waterproof cable set
- Wet-end bracket
- Nuts and bolt for ease of installation
- 3-year warranty

Optional extra features

- Integrated INS Type 20 or Type 30
- 25m, 50m or 100m cable
- Hydro dynamic fairing
- Dual head bracket
- RESON Sound Velocity Probes
- Teledyne PDS Survey Package
- RESON Service Level Agreements
- Motion and positioning sensors
- X-Range - improve range and reduce external noise
- Multi-Detect - multiple detections for enhanced detail over complex features and water column targets
- FlexMode - increase data density where you need it most
- Pipe Detection & Tracking - optimize detection of pipes
- Full rate dual head across the entire frequency range

For more details visit www.teledyne-reson.com or contact your local Teledyne RESON Office. Teledyne RESON reserves the right to change specifications without notice. 2016@Teledyne RESON

Teledyne RESON A/S

Denmark

Tel: +45 4738 0022

info@teledyne-reson.com

Teledyne RESON Inc.

U.S.A.

Tel: +1 805 964-6260

sales@teledyne-reson.com

Teledyne RESON U.K. Ltd.

Scotland U.K.

Tel: +44 1224 709 900

sales@reson.co.uk

Teledyne RESON B.V.

The Netherlands

Tel: +31 (0) 10 245 1500

rbv-info@teledyne-reson.nl

Teledyne RESON GmbH

Germany

Tel: 49 421 3770 9600

hydro-sales@teledyne-reson.com

Teledyne RESON Shanghai Office

Shanghai

Tel: +86 21 6876 8038

shanghai@teledyne-reson.com

PLD-17370-1